

AMERICAN PENSTEMON SOCIETY NEWSLETTER

Volume No. 5, Issue No. 2 apsdev.org

MAY, 2011



“View from Dutchman Peak to CA” by V Myrick

CONTENTS FOR THIS ISSUE

This issue of the newsletter finds us all at different stages of spring, depending on our altitude latitude and attitude. Hopefully things are greening up wherever you are. We find out enticing information on the Annual Meeting to be held in July in and around Medford Oregon. An interesting article on finding a Penstemon growing in Wyoming for the first time. We look back to a visit with Russ Buhrow, Curator of Plants at Tohono Chul Park in Tuscon and their Penstemon breeding program. We have learn of a project by Mikel Stevens which will eventually put past issues of The American Penstemon Society Bulletin on line and allow for content searchability. Stay tuned for details.

**Greetings, American Penstemon Society Members,
Ginny Maffitt**

Here are some July, 2010 scouting photos snapped along the routes we’ll be taking on the APS Annual Meeting trip to the Siskiyou Mountains in Oregon. They begin as Louise Parsons and I exited I-5 in southern Oregon. Within 2 miles, we saw the first two penstemon species. We then

ended up stopping the car every few miles for new species and to decide which stopping place was the best for you to see! We went as far as Dutchman Peak, a drive of about 20 miles reached by lunch time. We found places for short hikes and those that just involve parking the car and jumping out! Not only did we see many penstemons, a hybrid and near-penstemon along the way, but as you'll see on the link below, a plethora of other species in full bloom. The second week of July seemed perfect for the floral display, driving between 5000 and 7000' elevation, with temperatures in the 70's. We've now added on an extension to Observation Peak from Dutchman Peak with an optional short hike featuring views into the California Siskiyou and more flower species.



Penstemon rupicola, by V. Myrick

This year's tour offers viewing of 10-12 penstemon species over the two days of touring. This is the most pents to be seen, in the shortest driving distance, of any of the trips offered in the ten years I've been a member! Our guides include a local forest ranger botanist, two well-known photographers and a biologist/author with years living in the area, plus Louise and myself. The modest registration fee of \$50 is one of the lowest in recent years. It ensures two days of guided tours, a visit to a notable Central Point garden, and two evenings of photo-filled talks (with a surprise announcement) and great meals. To accomplish all of this within our budget, we need to receive your registration soon, as we have a contractual goal of 40 room rentals with the Medford, Red Lion Motel.

You'll find my picture file and that of noted photographer, Gary Monroe, by going to our group website: APSDEV.ORG. Click on MEMBERSHIP, then Annual Meetings in the left hand column. Enjoy the incomparable views and flowers there! Then print out the attached registration and anticipate viewing those flowers with us from July 8-10 this summer!
Ginny Maffitt, Trip Chairman.

BE SURE AND INDICATE IN THE REGISTRATION WHICH DAY YOU WISH TO GO TO BEAR CAMP. PLEASE, DON'T EVERYONE CHOOSE SUNDAY!!!
ALL TRIP INFORMATION (TRIP GUIDES, PLANT & READING LISTS), WILL COME TO YOU VIA EMAIL, UNLESS OTHERWISE REQUESTED!!

Schedule: All meetings are at the Red Lion Hotel, Medford, Oregon.

Friday, July 8,

5-6 p.m. Check in at Red Lion Hotel main lobby at APS table; rendezvous with friends in bar nearby .

6 p.m. Siskiyou Room: no-host bar and plant sales tables open, dinner follows.

7 p.m. Speakers: Ginny Maffitt, "Identifying the Penstemons of Southwest Oregon

Norm Jensen: "Plants and Places, A Southwest Oregon Photographic Tour"

Carpool signups with subgroups for each guide

Saturday, July 9:

7 am: With lunch and supplies, meet in the Red Lion rear parking lot. There will be two groups with destinations to either the Mt. Ashland loop or the Bear Camp trip. Guides with groups of cars will leave at five to ten minutes intervals (reducing congestion at the flower sites). A 15 passenger van, driven by Dwayne Dickerson (as he did in 2010) will go to Mt. Ashland both days.
2:00 to 5:00 PM Open Garden and Plant Sales, Kathy Allen's Garden (see article on p. 9)
6 p.m. Dinner in the banquet hall; sales tables and no-host bar open.
7 p.m. Speakers: Louise Parsons, Rockhound, : "The Mixed-up Geology of the Siskiyou Mountains"; Dorothy Tuthill "The Tualatin Penstemon";
President Val Myrick: annual business meeting, introduction of new officers.

Sunday: July 10:

7 a.m.: Again, meet with lunches in hand in the rear parking lot, ready to tour the alternate trip. This is the last official function of the 2011 APS meeting. We planned it this way to accommodate those who need to leave promptly for home or those who wish to continue on from the Bear Camp trip to the Oregon coast.

Suggestions for pre- or post-tours will be provided in registration packets by Val Myrick. There will also be a list of other activities you might wish to pursue while in this vacation hotspot (also see Nov. 2010 Newsletter article) in a micro-website prepared by the Medford Visitors Bureau.



Penstemaniacs smiling for the camera in the heart of prime Penstemon Habitat. G. Maffit

Housing: Make your own reservations, please. The Red Lion has excellent rooms which are being offered to us at great prices. The North American Rock Garden society has held several winter study weekends here, and attendees give high praise to the rooms, the in-house restaurant and the banquet facilities.

Room rates: Single: \$80.95 plus tax Double: \$80.95 plus tax
 Triple: \$90.95 plus tax Quadruple: \$100.95

Phone: 1-541-779-5811 and tell them you are with the APS group in July to get preferred rates.

Dinners with the group are optional, but we'd sure love to have you join us! These costs will be added to your registration fee to be sent in with your check. When you check in, you'll be given tickets for each meal you choose and/or the van ride.

Friday Dinner: Check one choice:

- *Tillamook Cheddar Chive Chicken _____
- *Medley, Roasted Vegetables in Pastry topped with feta cheese _____
- *Mustard-Crusted Pork Loin, with sage dressing, cinnamon apples _____

\$24.33 includes 18% tip

Saturday Harvest Buffet: Choice of 3 entrees such as Char-grilled King Salmon, Sliced Tri-tip, forest mushroom sauce, Pork Loin, or Grilled Chicken Breast, plus Yukon Gold potatoes, NW veggie saute medley, spinach salad, cabbage slaw, raspberry sauce, dessert buffet; \$29.59 includes 18% tip.

15-passenger van (we'll book the driver & guide plus 12 passengers daily (for breathing space)

driven by Dwayne to Mt. Ashland both days. We'll give you a 'bus' ticket at check-in. Cost: \$25.00.

Registration per person: (not optional!)

Cost: \$50.00

Coordinator: Ginny Maffitt, Registrar, Dwayne Dickerson, Great Co-leaders: Louise Parsons and Val Myrick, and Mary Cunningham, Treasurer!!

REGISTRATION: PRINT THIS DOCUMENT AND MAIL WITH YOUR CHECK TO:

Dwayne Dickerson, Cherry Creek Capital Management
600 South Cherry St., Suite 226, Denver CO 80246

email: DwayneDickerson@gmail.com Office hours: M-F 6 a.m.-4 p.m.(MT), Phone, 1-800-889-8579

NOTE: Registration deadline is May 1; meals changes can be made up to July 1.

NAME _____

ADDRESS _____

EMAIL _____ PHONE _____

_____ Yes, I'll be a car-pool driver (passengers will chip-in gas money).

Saturday _____ or Sunday _____ to tour Bear Camp.

REGISTRATION FEE: \$50.00

FRIDAY MEAL CHOICE: _____ \$24.33

SATURDAY BUFFET \$29.59

VAN RIDE, MT. ASHLAND TOUR, 24 SEATS OPEN \$25.00

YOUR TOTAL: \$ _____

PAYPAL AVAILABLE: for overseas members, etc. Go to www.paypal.com> "SET UP YOUR ACCOUNT"; go to "SEND MONEY"; follow prompts to APS.Treasurer@yahoo.com for payment destination. The registration form still goes to Dwayne Dickerson's address.

You must be a paid-up 2011 member to register. You may send annual dues to Dale Lindgren 9302 Maloney Dr., North Platte, NE, 69101: \$15 for U.S. & Canada; \$20—elsewhere;

Special: \$30 for 3 years, U.S. & Canada. Students: \$5. Lifetime: \$150

Registrations remain open to all APS members, old and new at this time. We do need to close the dinner reservations at the Red Lion by July 1 to allow for their planning. Registrations have been very slow this year so far. A few weeks ago, Dwayne Dickerson figured out that the extra cost of driving from Denver to Medford and back was an extra \$75. So despite the rising fuel costs, we're confident that the dozen or so penstemons, plus many other species you'll see, will be well worth your outlay. The Siskiyou mountain area (and all of Oregon) have had a banner snow year; those flowers will be waiting to see you!

Ginny Maffitt, APS 2011 annual meeting leader.



"Carniverous cobra lilies", (Darlingtonia californica) on Eight Dollar Mountain, on self-guided tour. V. Myrick

Penstemon Breeding at Tohono Chul Park Russ Buhrow, Curator of Plants



The city of Tucson has expanded rapidly from a sleepy western cowtown nestled in a beautiful, saguaro studded, desert mountain valley. From 1940 to 2010, Tucson's population has grown from less than 40,000 to nearly one million in the metropolitan area. In the midst of this rapid growth, philanthropists Dick and Jean Wilson wanted to preserve part of the desert on Tucson's fast growing northwest side. This desire resulted in the creation of the 36 acre (now 49 acre) Tohono Chul Park in 1985.

The Park started with several primary draws; nature trails through native Sonoran Desert vegetation, a collection of regionally adapted plants and gardens, an art gallery, and fine dining at the Tea Room. Very early it was decided that wildflower displays would bring people to the Park, especially in years with little rainfall and few flowers growing naturally in the desert. Fortunately, the mix of wildflowers included penstemons, especially the local native *Penstemon parryi* which produces displays throughout the Park reminiscent of a Monet painting. *Penstemon eatonii*, *P. palmeri*, and *P. spectabilis* were also grown in smaller numbers at that time.

Enter a much younger Curator of Plants with an interest in penstemons in 1991. Soon after I started working at Tohono Chul, I noticed funny looking plants that looked halfway between two of our species-hybrids! Most of them weren't all that exciting, mostly just interesting. I started selecting lines of *Penstemon parryi* for color and disease resistance with minimal success. A similar outcome came from the *Penstemon parryi* X *superbus* hybrids. *Penstemon parryi* X *eatonii*, while attractive, was nearly completely sterile, and the few seeds that resulted didn't germinate.

In the mid 90's, a *Penstemon palmeri* X *parryi* plant showed up on the grounds. Again not that great, but interesting. We grew out the seeds and figured to sell them as a novelty. We had actually been selling them for a while when they started to bloom. The variation in the seedlings was amazing! Colors varied from white to pink to peach to lilac and magenta. The plants were anywhere from a foot tall to 6 feet tall. We immediately stopped selling the plants until we had high graded them for cool ones. A bit later in the season plants with vivid purplish red flowers started to reveal themselves. One in particular had flowers with a fairly dense covering of glandular hairs, producing a sparkling appearance. We believe the original hybrid was pollinated by a very red form of *Penstemon superbus*, producing *Penstemon (palmeri* X *parryi)* X *superbus*.

Cuttings were provided to Civano Nursery of Sahuarita, AZ, who had expressed an interest in producing improved penstemons in cooperation with Tohono Chul Park. The plant displayed in the photograph is a one season clone from the original plant, which was subsequently named 'Red Headed Beauty'. This plant is currently being examined for a patent, and was sold to the public for the first time in March 2011. We expect *Penstemon* hybrid 'Red Headed Beauty' to be well adapted to much of the southwestern US, as well as probably around USDA zone 6. We expect to have quantities large enough for general distribution within a year. Until then, plants will usually be available through Tohono Chul Park's Retail Greenhouse.



Penstemon hybrid 'Red Headed Beauty'

Tohono Chul's propagation program now regularly grows between 40 and 70 species of penstemons as well as many other native plants only available here. We are generating new hybrids every season mostly from Section Peltanthera, some very promising with intense colors, high vigor, excellent longevity and many with wonderfully fragrant flowers. When in Tucson, come and visit Tohono Chul Park. Penstemaniacs are always welcome!

A Surprising Addition to the Flora of Wyoming

By Marcel Jouseau

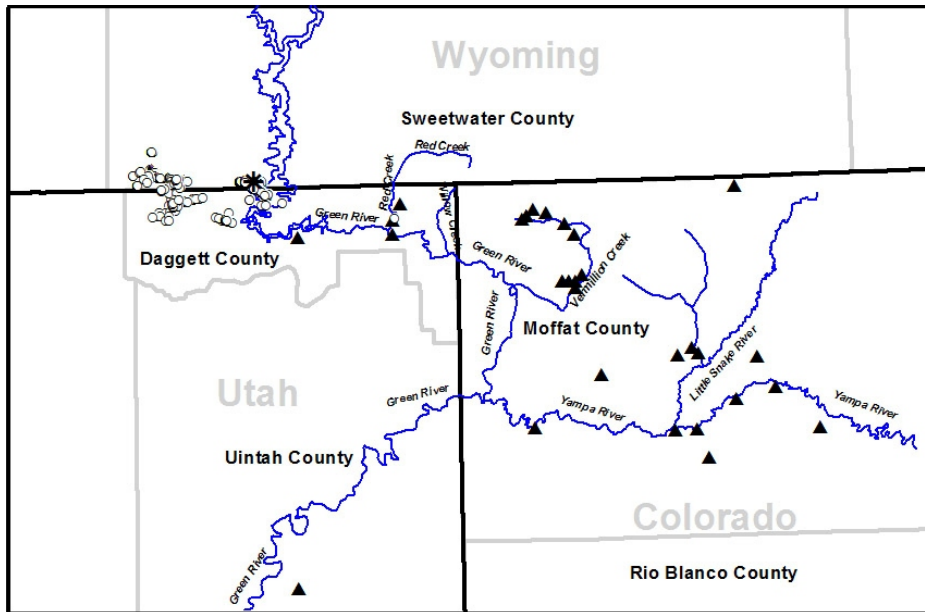
A large genus of Wyoming plants just got larger. There is one new addition to the *Penstemon* genus, previously reported with 46 taxa (Dorn 2001). In early June 2010, while carrying out a mapping survey to document the geographic distribution of *Penstemon acaulis* var. *acaulis* (L.O. Williams) Neese, in southwest Wyoming, I came across plants of *Penstemon acaulis* L.O. Williams var. *yampaensis* (Penl.) Neese. This lucky find occurred on a ridge north of the Lucerne Valley, approximately one mile north of the joint Wyoming-Utah state line. A voucher was deposited in the Rocky Mountain Herbarium (accession # RM 827540) accessible and viewable at (accession # RM 827540) accessible and viewable at _

<http://www.rmh.uwyo.edu/data/search.php?Genus=Penstemon&Species=yampaensis>. Dr. Ron

Hartman, Herbarium Curator, is transforming RM into a “virtual herbarium” for the benefits of all interested in plants.

The lateness in the day of the find, a long and exhausting mapping day and threatening clouds precluded exploring the area to determine the extent of the distribution of this new find on the ridge.

Up to now *P.a.* var. *yampaensis* was known only from northwestern Colorado Moffatt County and northeastern Utah



Above: Distribution of *Penstemon acaulis* (○) and *P. yampaensis* (▲) plus its new location in Wyoming (*). Map by M. Jouseau.

Daggett County and Uintah County. More specifically, in Colorado the taxon is found in the Yampa River watershed, Vermillion Creek watershed, Snake and Little Snake watersheds. Better known locations include Irish Canyon, Maybell, Sunbeam. In Utah it is known from Clay Basin and Browns Park in Daggett Co. and one location in Uintah Co. By contrast the distribution of *P.a.* var. *acaulis* is limited to the Flaming Gorge Basin with its northern limit a narrow strip of land in Sweetwater County north of the Utah-Wyoming state line. The eastern limit

Red Creek, Browns Park area, in Daggett Co, Utah; the western limit is about 5 miles west of McKinnon, Sweetwater County and the southern limit is Phil Pico Peak lower slopes and Sheep Creek Gap in Daggett County, Utah. See Map (open circles = *P.a.* var. *acaulis*, filled triangles = *P.a.* var. *yampaensis*). However, the identity of the specimens collected in the Red Creek area and a specimen of *P.a.* var. *acaulis* collected in Uintah Co., Utah (Kass & Preston #2679) may not have been finally resolved as they may belong to *P.a.* var. *yampaensis* (Franklin, 1992). Franklin states that the range of *P.a.* var. *acaulis* “does not extend further east than the east end of the Lucerne Valley Peninsula.” The location of the new find of *P.a.* var. *yampaensis* places this record approximately 25 miles northwest of the westernmost record in Browns Park and practically in the center of the known distribution of *P.a.* var. *acaulis*. Previously the potential overlap of the two

taxa had been suggested by Fertig and Welp (2001) who stated: “Specimens of *P. acaulis* from the Brown's Park area along the Utah/Colorado border have broader leaves and appear to be morphologically transitional towards *P. yampaensis*...” echoing Neese in Welsh et al. (1987) who wrote: “*Penstemon acaulis* is an unusual penstemon of unparalleled dwarf habit. Plants at the eastern end of the distribution have slightly larger leaves and flowers and have been recognized as *P. yampaensis* Penl., but specimens from Brown’s Park, Utah, near the Colorado border are geographically and morphologically transitional. The variation seems best recognized at the varietal level...”

Unfortunately circumstances precluded further exploration to determine the extent to which *P.a. var. yampaensis* shares habitat with *P.a. var. acaulis* in Wyoming. Additional exploration needs to be carried out that would provide information on the extent of the geography of the taxon, as well as its abundance so that protection needs could be determined.

(The author has mentioned he will return to the area in June to do further research and surveying.)

A comparison of the voucher with the voucher for the specimen collected by Penland and deposited in the Rocky Mountain Herbarium (accession # RM 248800) shows identical characteristics. The plant is definitely caespitose and acaulescent. The leaves are cineraceous (grey color), 20 mm long and 2.5 mm wide, oblanceolate, acute. The calyx is 6.5 mm long with lobes that are long and acuminate. The corolla is 16 mm long, rosy pink and externally pubescent, with golden beard in the throat. Three flowers emanated from the same point on the stem, on individual pedicels 7 mm long and 0.5 mm in diameter. No seeds were observed on the plant.

P.a. var. yampaensis was found growing in shallow, sandy soil on a flat rocky ledge of the Wasatch Formation, as determined by overlaying the location of the plant specimen on a digital copy of Love’s map of the geology of Wyoming. The ground was void of any forbs, other than *P.a. var. acaulis*, or grasses. The conditions are windy and arid. A few junipers are scattered along the ridge. Plants are permanently exposed to full sun.

It is always thrilling to find new locations of taxa outside their known distribution and this find was especially so, as it was unexpected. With this find come questions regarding the distribution of the two varietal forms, as well as the evolution of these two taxa. This find also suggests the need for surveys to determine whether additional plants of *P.a. var. yampaensis* can be found in Wyoming along the Utah



and Colorado state lines and to determine the overall distributions of the two taxa in the regional context of the three states and the extent of the overlap and transitional forms.

References

- Dorn, R.D. 2001. Vascular Plants of Wyoming, 3rd ed. Mountain West Publishing, Cheyenne, WY.
Fertig, W. and L. Welp. 2001. Status of stemless beardtongue (*Penstemon acaulis* var *acaulis*) in southwestern Wyoming.
Franklin, M.A. 1992. Report for 1991 Challenge Cost Share Project Ashley National Forest. Target Species: *Penstemon acaulis* var. *acaulis* L.O. Williams, March 1992.
Neese, E. 1987. *Penstemon* Mitch. in: A Utah Flora, Great Basin Naturalist Memoir No.9, 1987,

Brigham Young University. ed.: Welsh Stanley L., D. Atwood, S.

Marcel Jouseau is retired in Minnesota and has become an "itinerant botanist" interested in spatial distribution modeling of species. He is anxiously awaiting the arrival of warmer weather in both Minnesota and SW Wyoming. This article first appeared in the March 2011, *Castilleja*, the newsletter of the Wyoming Native Plant Society. WNPS can be contacted at Wyoming Native Plant Society, P.O. Box 2500, Laramie, WY 82073. www.uwyo.edu/wyndd/wnps/wnps_home.htm.

Previewing APS Siskiyou Annual Meeting Vendors

The July 8-10 APS Annual meeting will host four vendors during late afternoon and early evening hours at the Red Lion Hotel in Medford, Oregon. Three plant vendors and one artisan will enhance the occasion.

APS member Diane Stutzman of Desert Jewels Nursery in Spokane, WA, who offered an amazing array of penstemons at the Idaho APS meeting, will be offering penstemons and companion plants for sale. A botanist of diverse experiences, Diane has worked in the Idaho Panhandle National Forest, on a plant community ecology project in the Black Hills of South Dakota, and as a BLM botanist in the Columbia Basin of Washington. Here she fell in love with the beauty in the sagebrush grassland plant communities. As we all know, growing is unpredictable. Diane expects to have *P. pseudospectabilis*, *P. cyananthus*, and *P. venustus*, possibly in gallon size. Two new cultivars, 'Miniature Bells' and 'Iron Maiden' hold promise. Others may include *P. pinifolius*, *P. brandegei* (a favorite of Diane's) and/or *P. rostriflorus*. Companions may include *Erigeron linearis* and *E. compositus*. Enjoy a web-visit and be sure to peruse the penstemon page and illustrated blog at Desert Jewels website at:

<http://www.desertjewelsnursery.com/>

Two Medford area nurseries will be selling choice plants. Selection will range beyond penstemons and is sure to include many amenable companion plants. You may also wish to include an extra day or more to visit their nurseries and display gardens. Siskiyou Rare Plant Nursery (2115 Talent Avenue, Talent, OR) is located in the Bear Creek Arm of the scenic and peaceful Rogue River Valley. They are open Wednesday through Sunday from 9:00 AM - 5:00 PM and extended visiting hours may be made by arrangement. No time to visit? They will have a table laden with the little gems for which they are famous. For a preview and details, visit:

[http://siskiyouareplantnursery.com/](http://siskiyourareplantnursery.com/)

Goodwin Creek Gardens in Williams is a bit further away, but the drive west from the Phoenix exit at I-5 is beautiful. On the way, the town of Jacksonville is a charming stop. It is widely-known for a vibrant downtown area with enchanting historic buildings and many fine places to shop and eat. Goodwin Creek Gardens offers an extensive variety of plants, including herbs (both medicinal and culinary), scented geraniums, natives, and plants that attract hummingbirds and/or butterflies. If you can't spare the extra time for a visit, they will also be a vendor. Visit their webpage and be sure

to have a look at the impressive list of hummingbird flowers. One of my favorites is a real hummingbird magnet: Penstemon 'Firebird'.

<http://www.goodwincreekgardens.com/>

Lastly I am delighted to learn that APS member Nathan Miller and his wife, Sarah may plan to be offering artistry from Thistillium Pottery for sale. The pottery offers an amazing variety of creations for the garden from wind chimes to bird-feeders and bird baths. There is also a lovely assortment of pots, mugs, bowls, pitchers, jugs, and many other unique pieces. To quote a from the Thistillium webpage: "Pottery is intimately connected to the earth. Everything that goes into or onto a piece of ceramic work is taken out of the ground. Most of the materials used in our clay and glazes are mined in North America and some are even found right here in the Pacific Northwest. Thus, our pottery is not only made IN the USA, but OF the USA!" Thistillium also offers custom work, as noted on their webpage. Do visit their stunning page:

<http://thistillium.com/siteinfo/>

A Chance to Visit a GEM of a Garden

by Louise Parsons

On Friday, July 8, from 2:00 to 5:00 PM, APS Annual Meeting participants have an opportunity to visit one of the finest gardens in the west. The garden of seed-maven Kathy Allen is located in Central Point, Oregon, just a few miles from the Medford Red Lion Hotel. Kathy Allen has worked as a professional propagator and is widely-known for her skill. Over many years, she has created a vast garden with diverse habitats. Her garden includes rock and scree gardens, troughs, and incredible propagation facilities. Enthusiasts come from all over to her plant sales that include a wide variety of seed-grown gems, including many choice penstemons. Her sales tables will be open and APS is providing refreshments including wine and nibbles. We are very grateful to Kathy for sharing her incredible garden. It is a real treat any day of the year.



Scenes from Kathy's Garden, Central Point, Oregon. Yet another good reason to join your friends at the annual meeting in July. Photos by, V. Mryick

Membership Renewal

The American Penstemon Society involves almost 400 penstemon aficionados world-wide, many of whom will enjoy meeting other APS members and traveling to the Siskiyou Mountains of Oregon and northern California in July of 2011 and the Big Horn Mountains in Wyoming in the summer of 2012. Dues provide you with our newsletter (distributed by e-mail or snail mail as you prefer), annual bulletin, and the annual seed exchange. Dues run on a calendar basis, renewed at the first of each year.

US and Canadian dues \$15 US; Elsewhere \$20 US. Dues for students are \$5. Life Membership is \$150. In addition, members may pay two years in advance and receive the third year free. Please do not send cash.

You may pay either by check or by PayPal on our website at www.apsdev.org.

Make checks payable to American Penstemon Society. Mail to:

Dale Lindgren/Phoebe McFarlane, Membership Secretaries

9202 Maloney Drive, North Platte, NE 69101

If you wish to contact Dale Lindgren and/or Phoebe McFarlane, they can be reached at

aps.membership@yahoo.com. Please update any current info with new phone numbers or e-mail addresses. Thanks for your enthusiastic support of the Society.

Name- _____

Address- _____

Phone #- _____

E-Mail- _____

We do not sell, share or distribute member data in any manner.

Remember, if you plan on attending the exciting meetings in the Siskiyou Mountains this July, your membership needs to be up to date. Also, if you have changed your e-mail address lately, please send this information to the Membership Chairmen at aps.membership@yahoo.com. Thank you.

\

NEW MEMBERS

January through April 2011

Julie Shapiro of Hull, Mass. is our newest lifetime member. Thank you, Julie, for making this commitment to APS. We would also like to welcome the following new members:

Kathleen Allen, Upper Black Eddy, PA

Nancy J. Chapman, Portland, Oregon

Jean-Pierre Cottron, France

Michael Dolan, Alturas, California

Martha E. Ferguson, Seattle, Washington

Whitney Rooney, Flagstaff Arboretum ,Flagstaff, Arizona

Joan Folwell, Pullman, Washington

Paula Fornwalt, Fort Collins, Colorado

Edith Fuller, Portland, Oregon

Serials and Exchange, The LuEsther T. Mertz Library, The New York Botanical Garden, Bronx, NY

Jens C. Frisvad, Kgs. Lyngby, Denmark

Vegetation Program, Grand Canyon National Park, Grand Canyon, Arizona

Bernadette Kuhn, Carbondale, Colorado

Stefan Lacroix, Weed, California

Ina Rae Lengyel, Idyllwild, California

Bonnie Miller, Mannuson Environmental Stewardship Alliance, Seattle, Washington

April Olbrich, Aloha, Oregon

Karen L. Paner, University of Wyoming, Laramie, Wyoming

Julia Rundberg, Idaho Botanical Garden, Boise, Idaho

Ann Spiegel, Wappingers Falls, New York

Aaron J. Wenzel, Columbus, Ohio

Harvey Wrightman, Kerwood, Ontario Canada

American Penstemon Officer List, 2011

APS Officers and Board Members for 2011 listed below. They represent eight different states and The Netherlands. We appreciate their willingness to serve and hope that the membership will help them out when asked.

President: Val Myrick vkmyrick@pacbell.net

Vice President: Andrea Wolfe wolfe.205@osu.edu

Treasurer: Mary Cunningham APS.Treasurer@yahoo.com

Membership: Dale Lindgren and Phoebe McFarlane APS.Membership@yahoo.com.

Board Position 1: Libby Wheeler glwheel@prodigy.net

Board Position 2: Eric Gouda e.j.gouda@uu.nl

Board Position 3: Barbara Lewis blewis@iriscolorado.com

Seed Exchange: Louise Parsons parsont@peak.org

Bulletin: Steve Love slove@uidaho.edu

Website: Hugh MacMillan humanator@yahoo.com

Auditor: Ed Godleski e.godleski@csuohio.edu

Nominating: Dallas and Sharon Boge dalboge@juno.com

Special Projects: Barbara Lewis blewis@iriscolorado.com

Membership Marketing: Ginny Maffitt maffitt6540@comcast.net

Past President: Bob McFarlane denverbob@aol.com

Historian: Dale Lindgren dlindgren1@uni.edu

POSITIONS OF RESPONSIBILITY.

Robins Coordinator Ginny Maffitt,
maffitt6540@comcast.net

Registrar of Cultivars and Hybrids Dr. Dale
Lindgren, dlindgren1@uni.edu

Librarian: Dr. Stephen Love, slove@uidaho.edu

Custodian of Slid Collection: Dr. Dale Lindgren,
dlindgren1@uni.edu

Newsletter: Mike Evans iroxranch@yahoo.com

